

Cost-effectively maintain RPC-based applications and freely extend them to participate in SOAP and SOA-based solutions



eCube Systems
Enabling Enterprise Evolution

Evolution Products

NXTware IME: Integrated Maintenance Environment for RPC-based Systems

HIGHLIGHTS

- *Integrated Maintenance Environment simplifies the maintenance and development of legacy RPC clients and servers in Eclipse*
- *Performance improvement wizards for database pooling and instance management*
- *Support for multiple RPC BROKER configurations and cross-BROKER communication, including Entera, NXTera, EZRPC, ProRPC, Tuxedo, SUN Forte, J2EE, and DCE.*
- **Benefit: Makes Maintenance Engineers more successful and productive while maintaining and extending applications based on RPC**
- *Wizard-based extension of RPC tools with commercial and open source SOAP, messaging, and Enterprise Service Buses platforms*
- *Wizards Automate interoperation and federation of legacy services*
- *Automatic deployment to repositories such as IBM WebSphere Service Registry and Repository (WSRR) and SOA Software's UDDIv3 Registry, Service Manager*
- **Benefit: Enables existing legacy applications to integrate as federated services to SOA and ESB platform subscribers**

A recent survey reported that 55% of IT professionals in the US believe Eclipse-based tools make it possible to extend the utility of applications that are based on legacy middleware. The majority of respondents reported their existing systems would last longer and be more efficient if Eclipse-based automated tools and wizards for maintenance and integration supported the systems.

NXTware IME, the industry's first integrated maintenance environment, is especially designed for software engineers who are responsible for maintaining and extending existing RPC-based middleware systems. Leveraging the Eclipse IDE, NXTware provides visual tooling that lowers the costs of maintaining, updating, and integrating existing RPC assets.

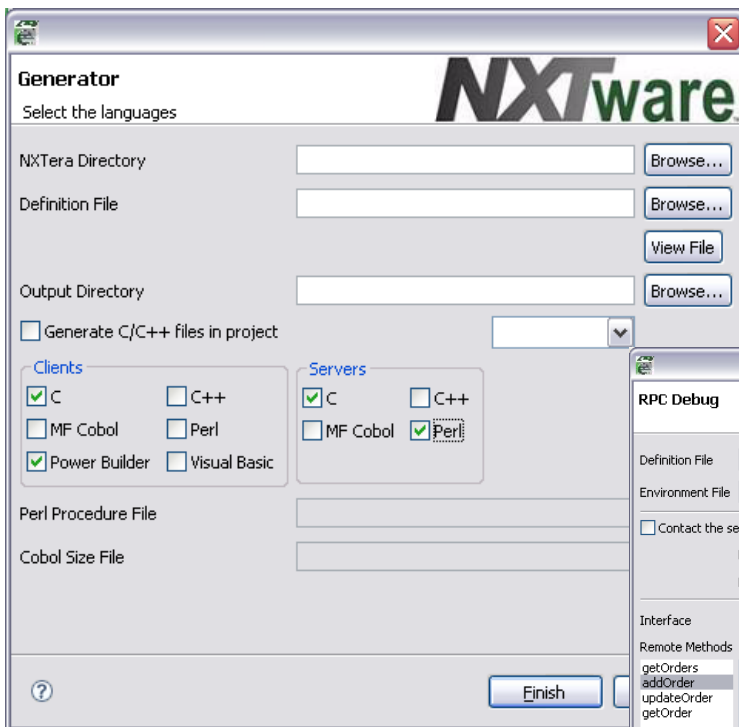
By using NXTware, IME companies can effectively respond to business demands by quickly extending capabilities, changing business logic, and modifying runtime configurations. At the same time, NXTware users get faster ROI from new technologies, like SOAP and ESB, because legacy RPC services are available to be called from these contemporary SOA platforms. Jump-starting the productivity of an SOA initiative is easy when NXTware IME enables you to use existing strategic business logic.

All of this is accomplished with wizards that automate time-consuming tasks and allow less-experienced maintenance engineers and RPC novices to be more productive. There is no need to upgrade to newer versions of RPC and thus no extensive interface development.



Evolution Products

NXTware IME: Integrated Maintenance Environment for RPC-based Systems



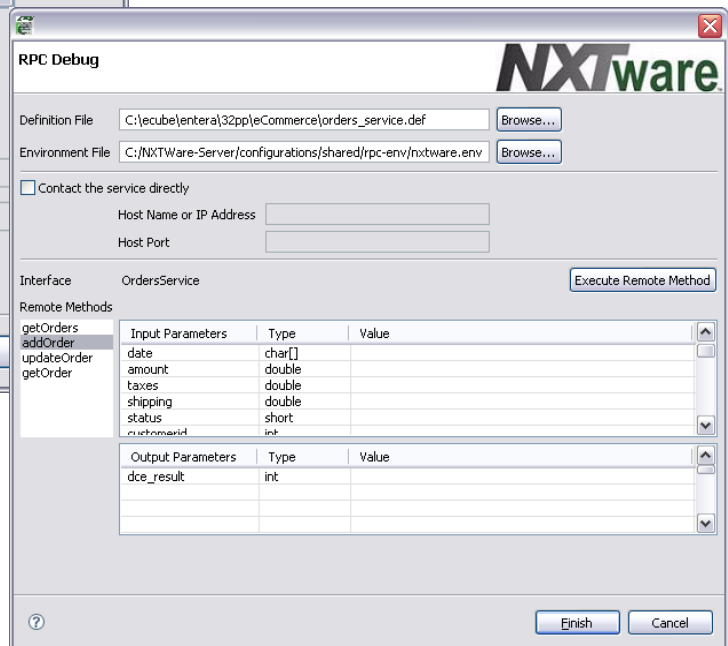
NXTware IME Eclipse-based RPC Tooling

The NXTware maintenance and modernization framework is comprised of tools used within the IME during the maintenance, integration, deployment processes, and by the legacy software itself during runtime.

These tools include configurators, interface generators, and runtime services. The purpose of the framework is to address the complexity, weaknesses, and gaps that are inherent to specific legacy platforms, versions, and architectures (for example: simplifying data access, deployment, and integration with messaging and SOA frameworks.) Additionally, NXTware makes legacy applications less brittle, capable of operation at high service levels, and flexible enough to serve as reliable participants in modern composite SOA applications.

What is NXTware?

eCube's NXTware combines the world's first Integrated Maintenance Environment (IME) with a maintenance and modernization framework to deliver tooling, components, and wizards that are designed to enable the efficient and cost effective maintenance of legacy middleware applications.





Evolution Products

NXTware IME: Integrated Maintenance Environment for RPC-based Systems

Feature and Benefits

The NXTware IME is designed specifically for maintenance engineers and those needing to integrate applications based on RPC middleware. Its unique blend of features and benefits makes it stand out in the world of Eclipse tooling.

Features		Benefits
Maintenance Tooling		<ul style="list-style-type: none"> • Support Eclipse standards and single development/maintenance platform • Simplify transition from development to maintenance teams • Compensates for gaps in knowledge and documentation • Provides basis for maintenance engineering to improve performance, modernize, or integrate
1.	Integrated Maintenance Environment	
2.	Import Wizard handles source import from scratch	
4.	Visual tools for Idl compiling for: Fortran, C, C++, COBOL, Pascal, Delphi, Basic, PB	
5.	Wizard support for source and binary analysis service	
Development Capabilities		<ul style="list-style-type: none"> • Increased engineering productivity • Removes hours and days from the process of updating an existing application with new functionality • Simplifies the long standing complexity of working with data • Support real-world heterogeneous environments
1.	Automatic generation of the client and server connectors	
2.	Automatic generation of client connectors with multiple protocols: http, TCP, UDP, etc.	
3.	Wizard-based generation of data services from SQL with support for data pooling	
4.	Automates database interfaces with database engines and supports multiple databases and connections pool -- homogeneous and heterogeneous configurations	
Integration Capabilities		<ul style="list-style-type: none"> • Enables less-experienced engineers to be more productive with visual tools • Focuses on business value, not on RPC "plumbing" • Enables RPC services to fully participate in SOA environments • Interoperate from IDL to SOA registry
1.	Wizard-based auto generation of RPC Web services (WSDL)	
2.	Wizard-based auto generation RPC messaging services supporting JMS and MQ ¹	
3.	Flexible deployment to service repositories such as IBM WebSphere Service Registry and Repository and SOA Software's UDDIv3 Registry in Service Manager.	
Deployment and Runtime Capabilities		<ul style="list-style-type: none"> • Simplifies runtime configuration management • Improves performance and availability • Enables support for multiple brokers • Provides inter-broker communications (e.g., RPC to CORBA or J2EE)
1.	Support for RPC project configurations (or partitions) that group available services and ORBs together while setting patterns for usage, availability, and set-up	
	Control for instantiation, fail-over, and search criteria in configurations	
2.	Automatic deployment of the RPC, SOA, and messaging services and all related files	
3.	Wizard for external Naming Services or NXTware Search Service	

¹ Support for other MOM's available on-demand



eCube Systems
Enabling Enterprise Evolution

Evolution Products

NXTware IME: Integrated Maintenance Environment for RPC-based Systems

Ready for

IBM | SOA

Specialty

IBM SOA Specialty

eCube Systems has been accepted to the IBM SOA Specialty after successfully meeting IBM's rigorous SOA technical and business requirements. With this achievement, the NXTware™ product family has been recognized as integrating with the IBM software and strategy for SOA.



eCube Systems

eCube Systems offers a family of middleware evolution products and services that maximize return on technology investment by leveraging existing technical equity to meet evolving business needs. Fortune 1000 companies and government agencies turn to eCube Systems to reduce risk, extend ROI, and increase productivity as they consolidate existing capabilities and evolve legacy systems to contemporary SOA platforms, such as ESB and Web Services.

eCube Systems, LLC, is headquartered in Montgomery, Texas, with marketing offices in Boston, MA and R&D in San Mateo, California, USA. For more information, visit us at <http://www.ecubesystems.com> or contact eCube Systems by email at ev-sales@ecubesystems.com or by telephone: 866-493-4224.

eCube Systems
Enabling Enterprise Evolution

© eCube Systems, L.L.C. 2007

Headquarters
550 Club Drive, Suite 272
Montgomery, TX 77316 USA
T: 936.760.1188
F: 936.449.4880
ev-sales@ecubesystems.com